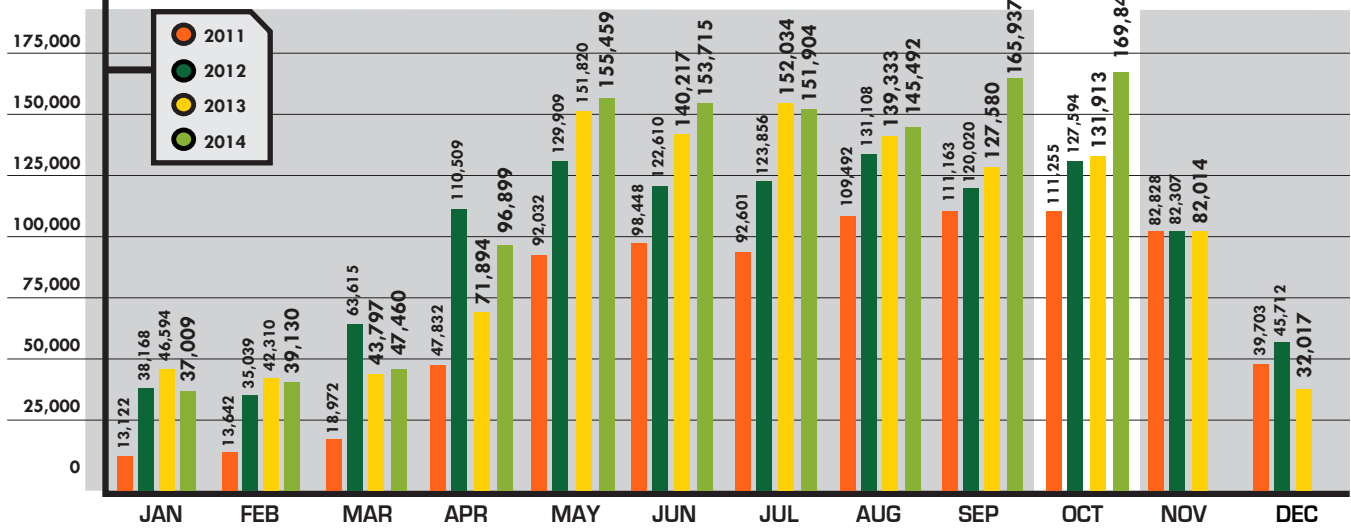
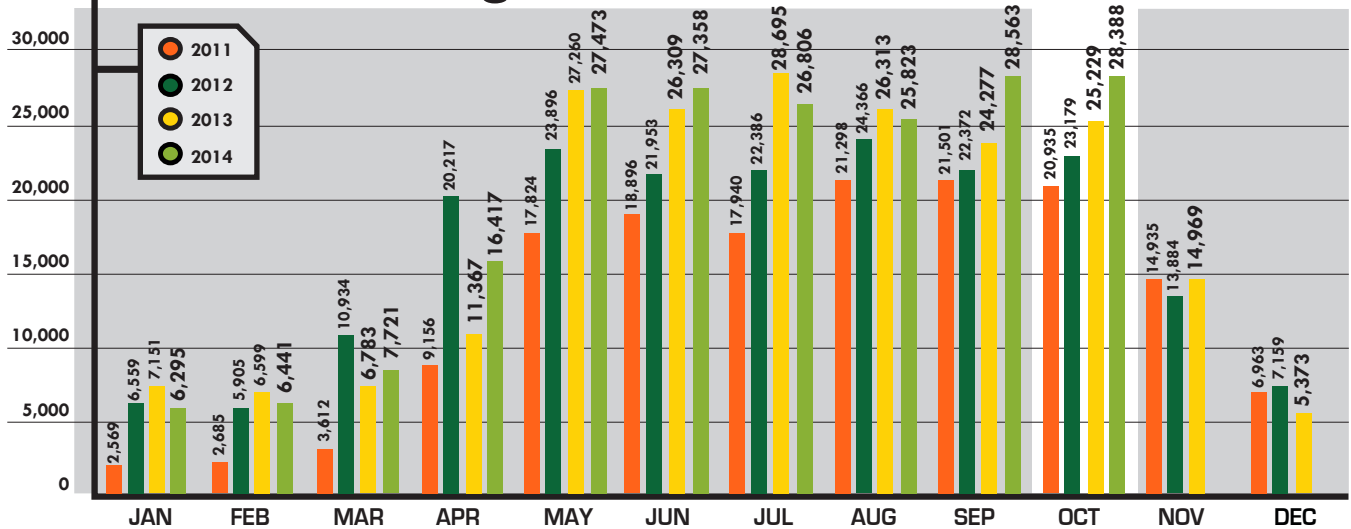


Billable Calls



Incoming Tickets

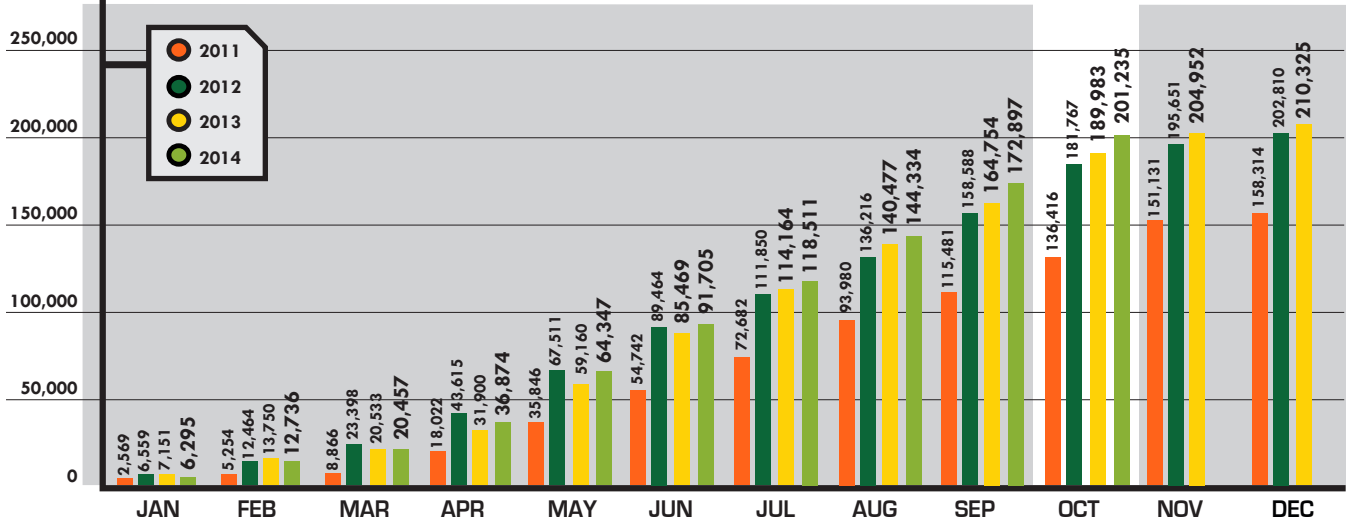




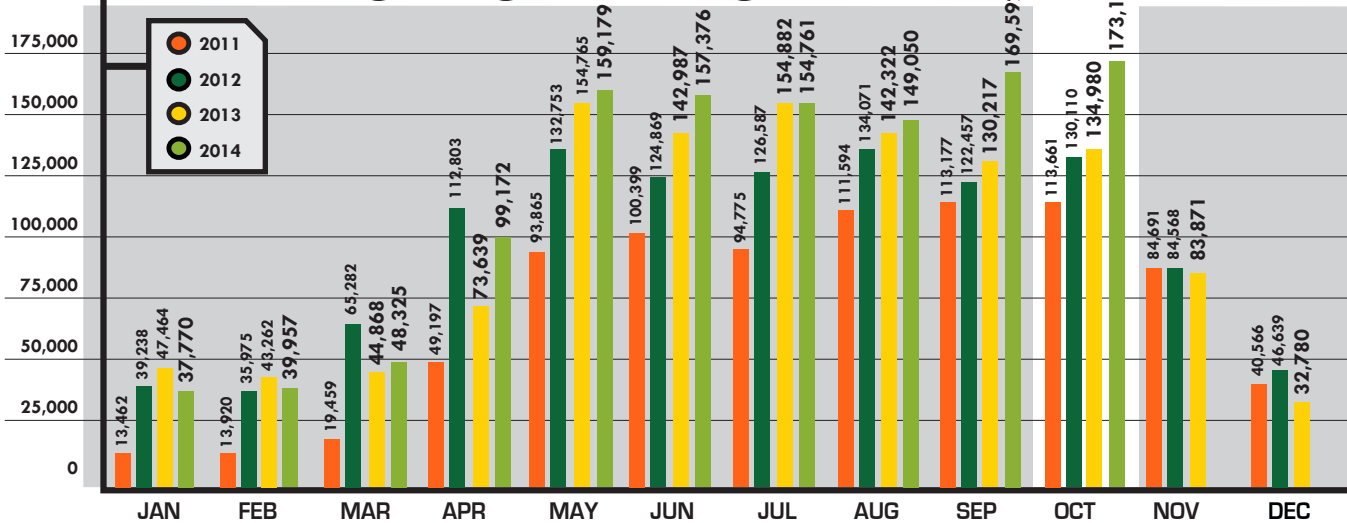
DASHBOARD REPORT

YOUR MONTHLY UPDATE FOR NORTH DAKOTA ONE CALL | **OCTOBER**

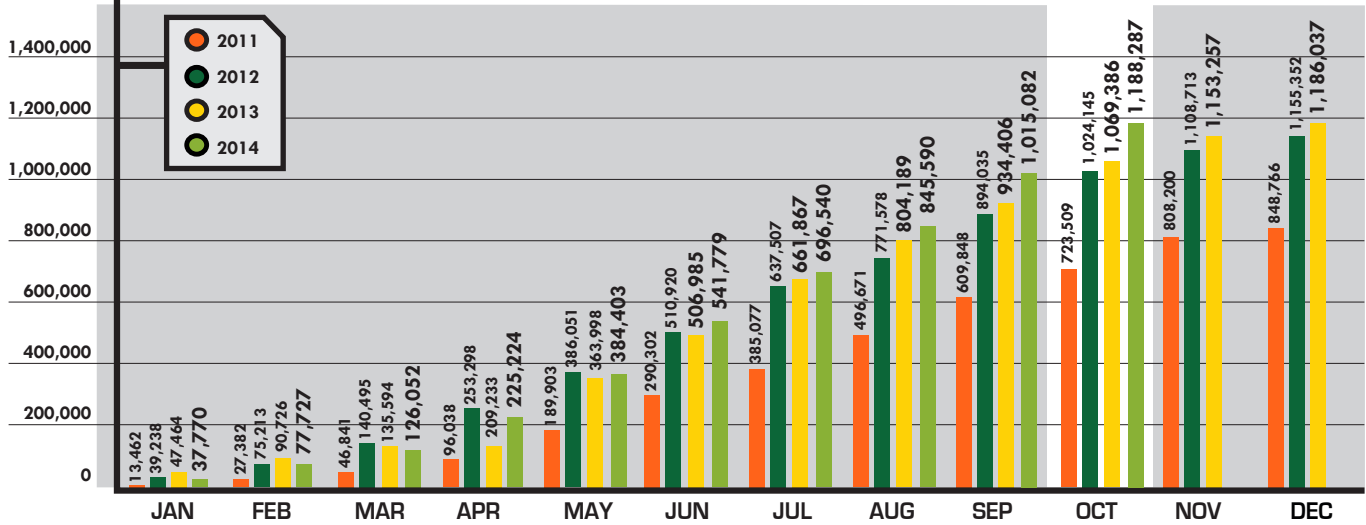
Incoming Tickets Y-T-D



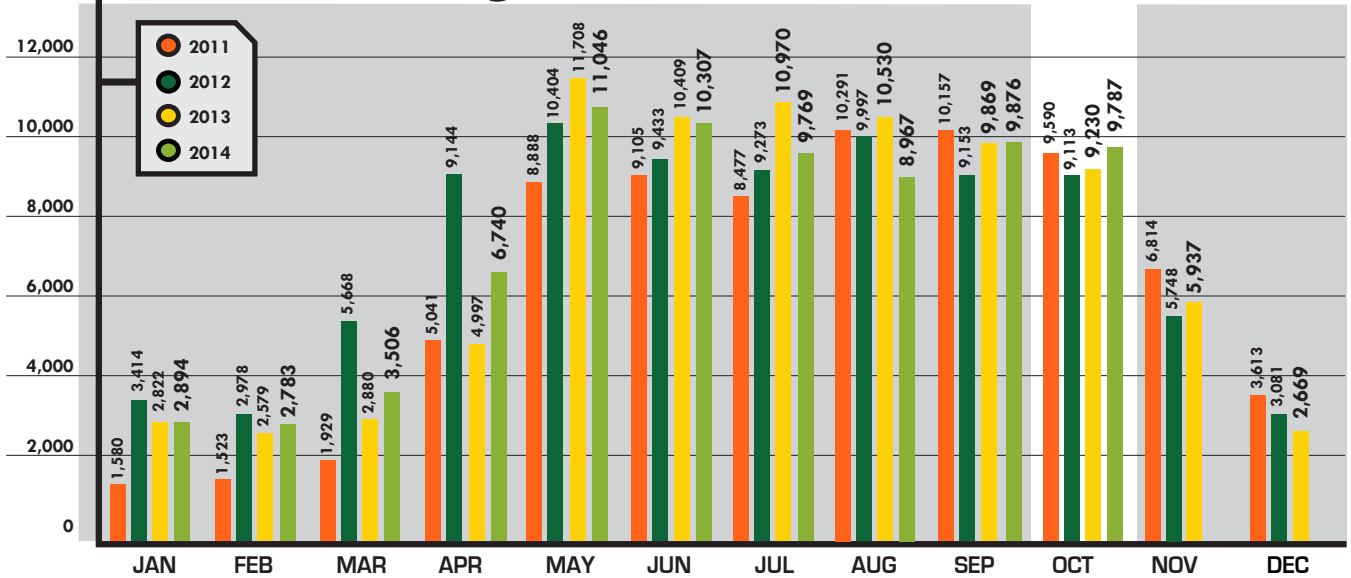
Outgoing Messages



Outgoing Tickets Y-T-D



Incoming Calls

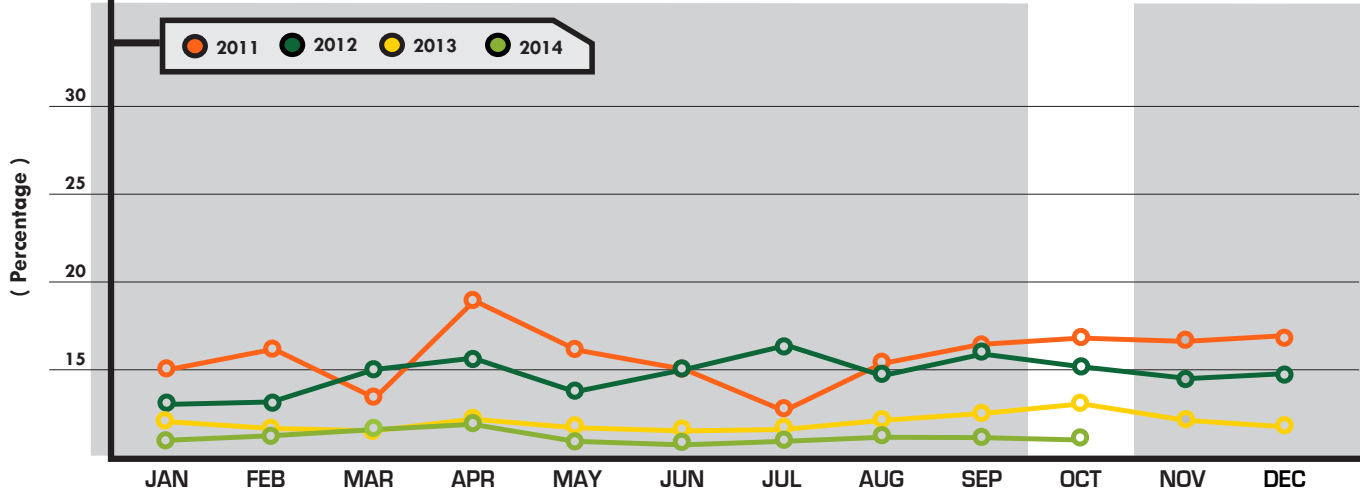




DASHBOARD REPORT

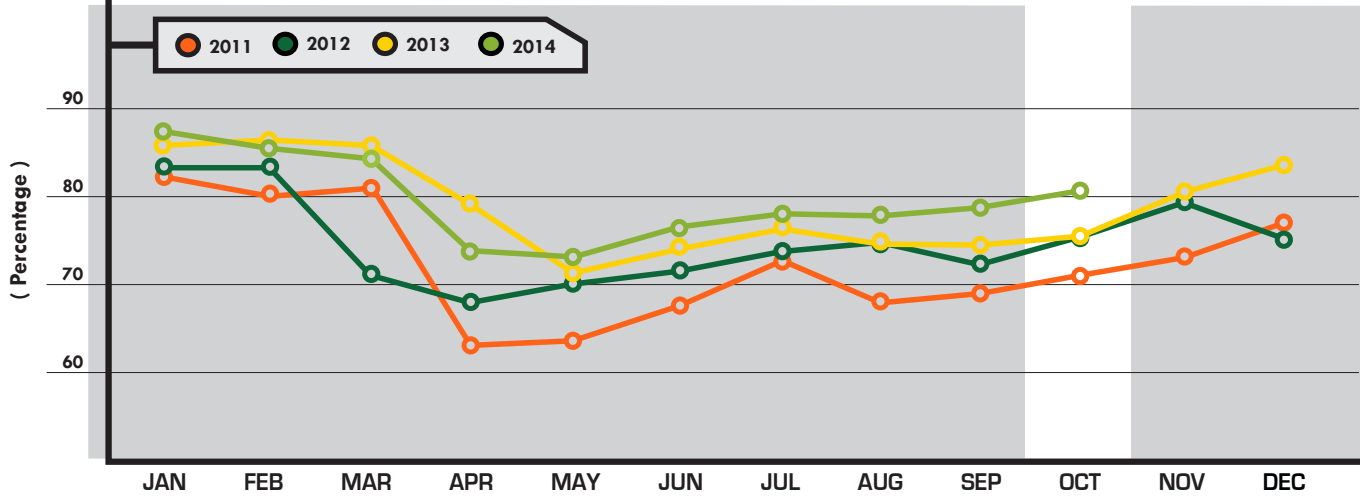
YOUR MONTHLY UPDATE FOR NORTH DAKOTA ONE CALL | **OCTOBER**

Operator Call Volumes



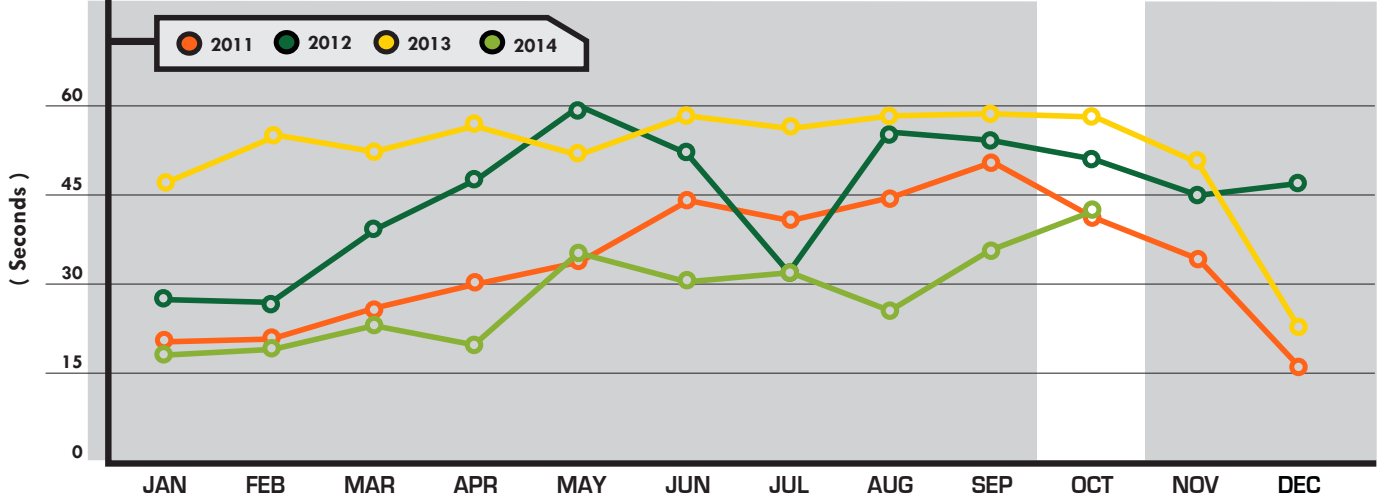
	2011	2012	2013	2014
JANUARY	15.37	13.92	12.01	9.91
FEBRUARY	16.40	13.94	11.30	10.63
MARCH	14.61	15.06	10.88	11.46
APRIL	19.13	15.92	12.45	12.26
MAY	16.55	14.17	11.96	9.71
JUNE	14.99	15.20	11.63	8.94
JULY	13.19	16.15	11.33	9.33
AUGUST	15.82	14.76	12.04	10.03
SEPTEMBER	16.58	16.28	12.15	9.80
OCTOBER	16.91	15.71	13.70	8.67
NOVEMBER	16.83	14.64	12.04	
DECEMBER	16.95	14.76	11.22	

Excavator Call Volumes



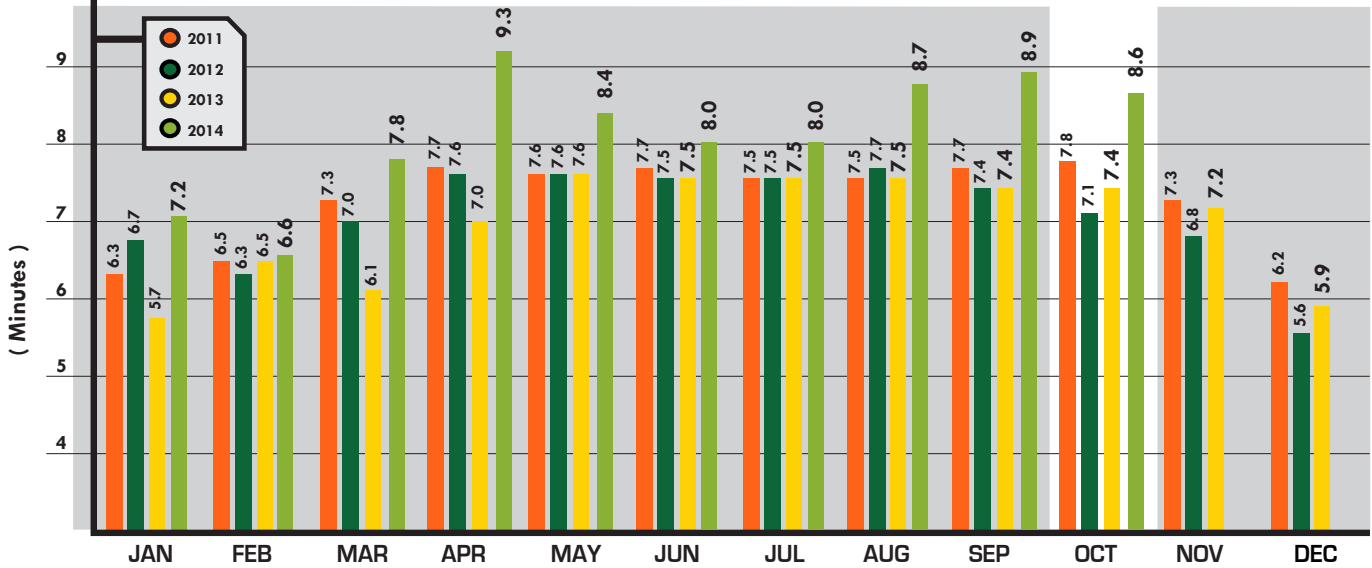
	2011	2012	2013	2014
JANUARY	81.71	82.46	86.62	87.74
FEBRUARY	80.35	82.16	86.95	86.01
MARCH	80.74	71.50	86.58	83.22
APRIL	63.41	68.45	79.04	74.06
MAY	63.74	70.47	71.24	73.25
JUNE	68.82	71.65	74.75	77.13
JULY	72.41	73.29	76.56	78.38
AUGUST	68.78	74.44	74.47	78.93
SEPTEMBER	69.27	72.54	74.24	79.25
OCTOBER	70.93	75.25	75.65	81.68
NOVEMBER	73.78	79.37	80.08	
DECEMBER	78.53	75.63	84.84	

Average Hold Time



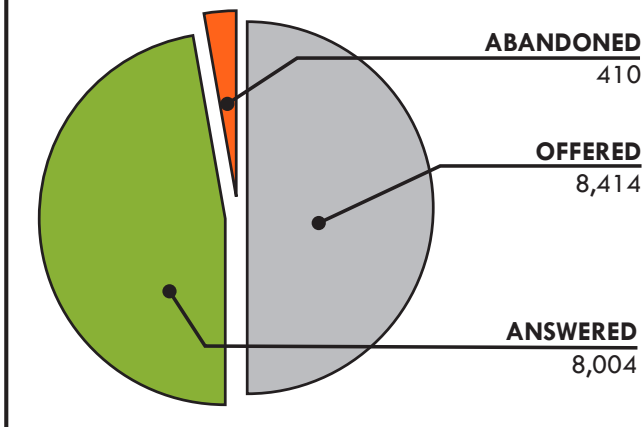
	2011	2012	2013	2014
JANUARY	22	27	47	19
FEBRUARY	23	26	55	21
MARCH	26	39	49	24
APRIL	30	48	56	20
MAY	34	59	52	35
JUNE	44	52	58	31
JULY	41	32	56	32
AUGUST	44	55	58	25
SEPTEMBER	50	54	59	36
OCTOBER	41	52	57	42
NOVEMBER	35	45	51	
DECEMBER	16	47	23	

Average Processing Times



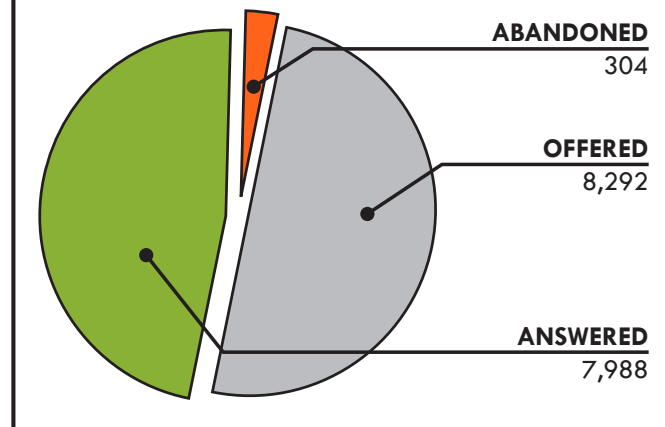
Abandonment

OCTOBER 2013

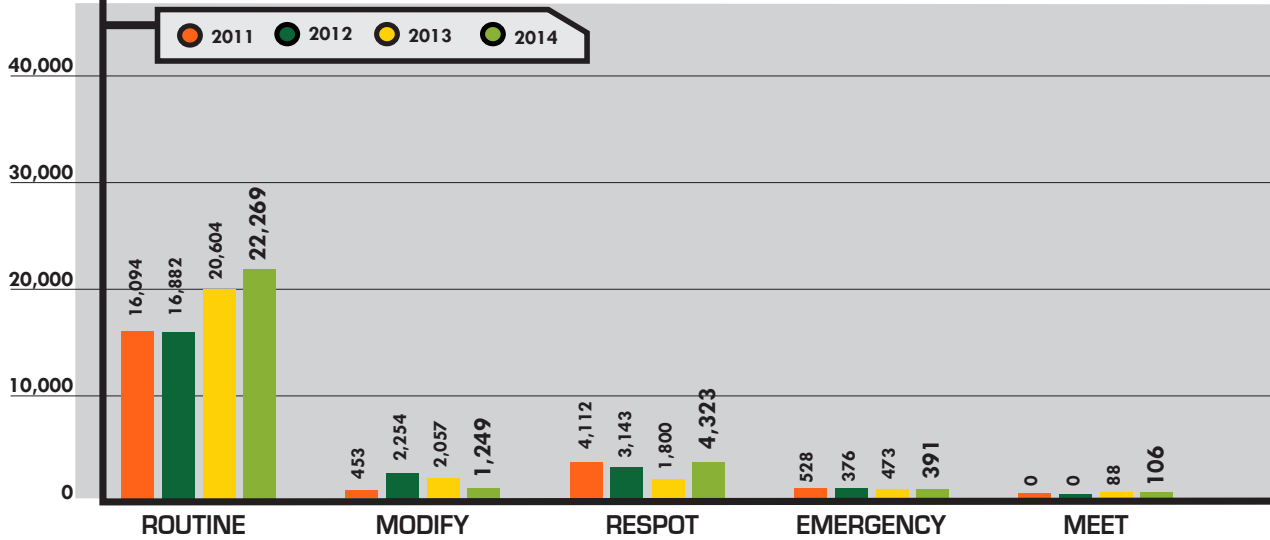


Abandonment

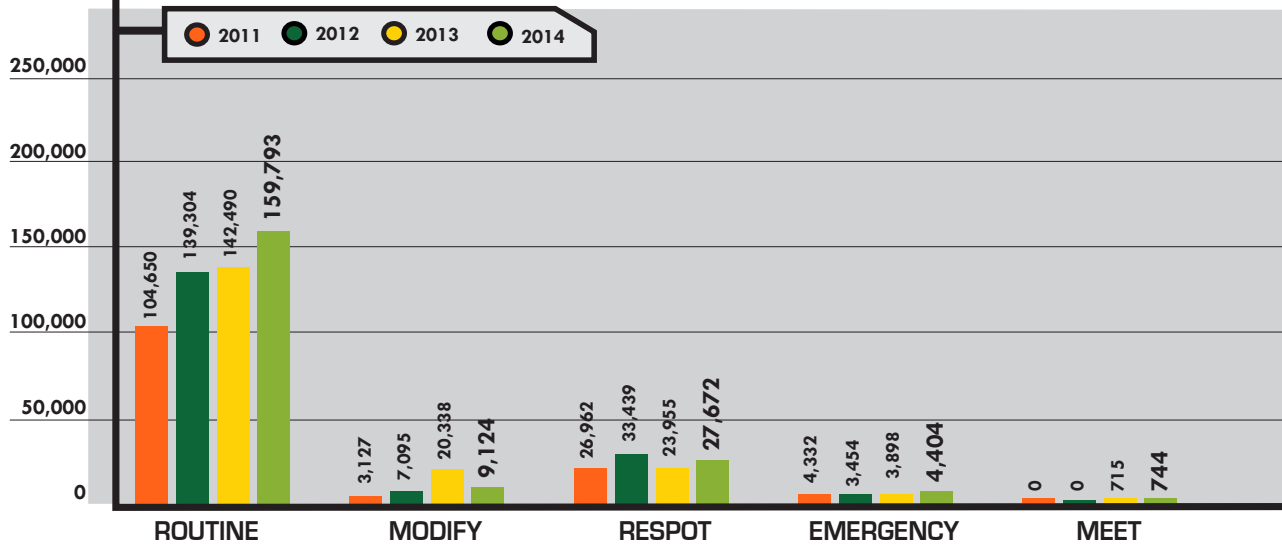
OCTOBER 2014



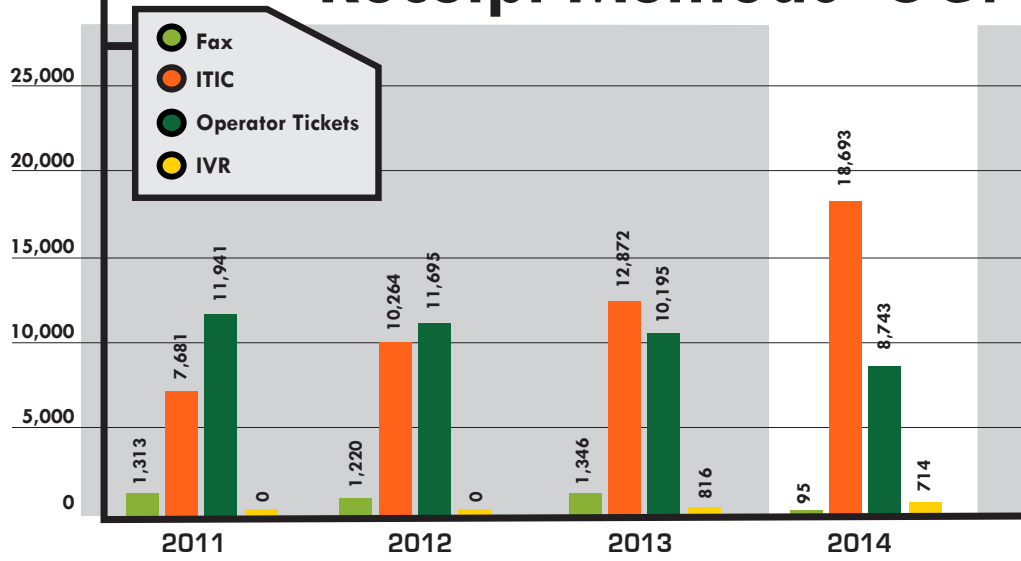
Incoming Ticket Types - OCT



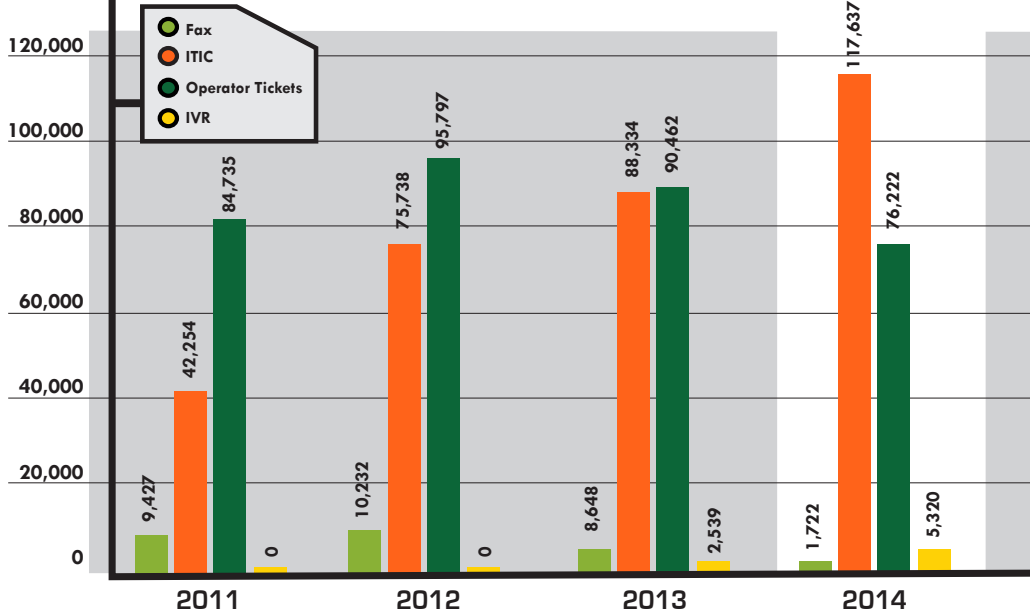
Incoming Ticket Types - OCT Y-T-D



Receipt Methods - OCT

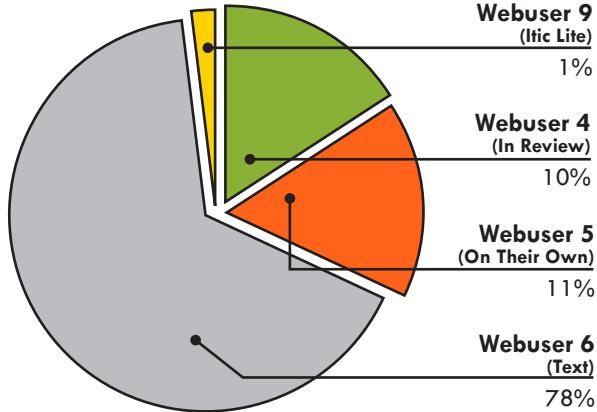


Receipt Methods - OCT Y-T-D



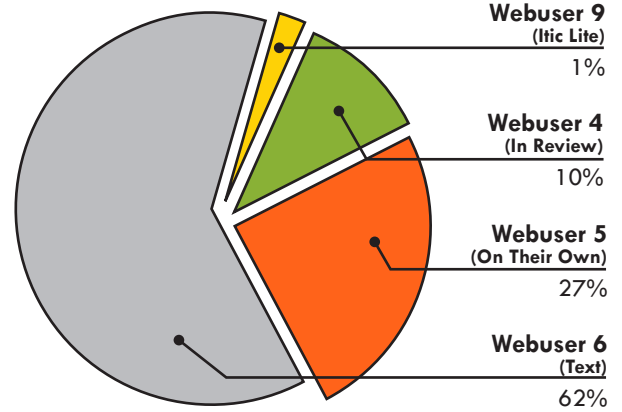
ITIC Breakdown

OCTOBER 2013



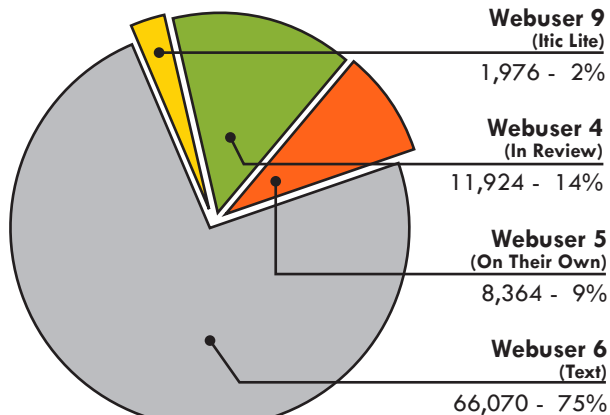
ITIC Breakdown

OCTOBER 2014



ITIC Y-T-D Analysis

OCTOBER 2013



ITIC Y-T-D Analysis

OCTOBER 2014

